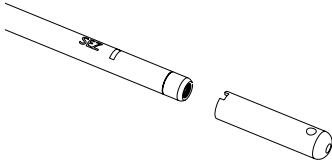


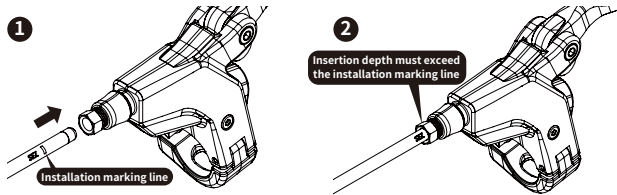
SEZ OPERATION MANUAL

A. Installation of SEZ-Fitting

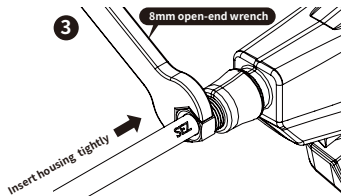
- Remove the protective cap from oil housing.



- Mount oil housing to the brake lever. Make sure the oil housing is pushed to the lever end firmly. (Insertion safety depth must exceed the installation marking line on housing, as shown in Fig. 1 & 2)



- Use 8mm wrench to tight screws while keep pushing the oil housing at the same time. Recommended tighten torque is 8Nm, as shown in Fig. 3.



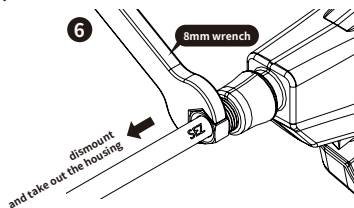
/ 01 /

Follow steps of A 1-A3 for housing installation.

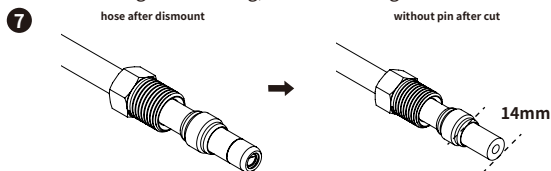
C. Cutting after housing installation

Once you completed the installation of the oil housing, if you still need to cut oil housing, please refer to the following steps.

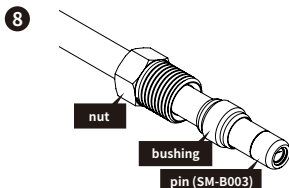
- use 8mm wrench tool, untighten nut completely, then take out the housing. As shown in fig 6. You will see the pin and bushing attached with housing as shown in fig 7.



- Use housing cutter, cut the hose to proper length you need. (Please make sure the incision is flat and smooth. It may result in leaking if the incision is askew)
- must re-measure and re-mark the installation marking line 14mm from the cut surface on the housing after cutting, as shown in Fig. 5



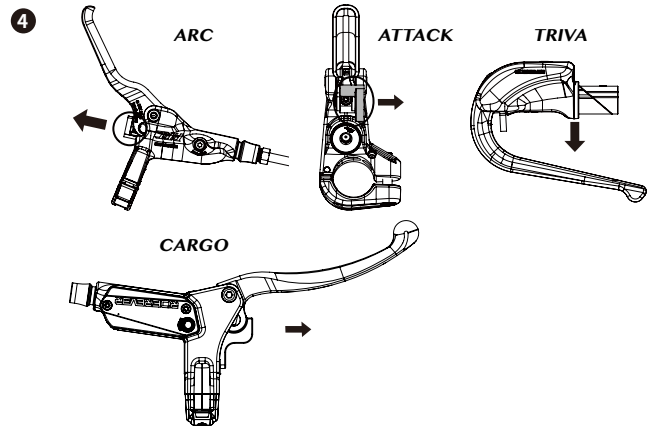
- Replace new compression nut and new olive bushing into the hose in order, as shown in Fig. 8.



- Pre-mount the new pin(SM-B003) to housing first
- Use needle driver, insert new needle into the oil housing. (Please make sure the needle surface is flush with oil housing surface after installation)
- Pre-mount the new pin(SM-B003) to housing first
- Follow steps of A 1-A3 for housing installation.

/ 03 /

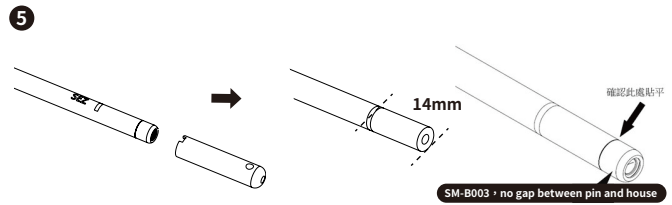
- Remove the spacer from lever, as shown in Fig. 4 to completed the housing installation.



B. Cutting and installation of SEZ fitting

If you need to adjust and cut oil housing before insert the housing to lever, please refer to the following steps.

- Remove the protective cap from oil housing(as shown in A)
- Use housing cutter cut to preferred length. (Please make sure that the incision is flat and smooth. It may result in oil leakage if the incision is askew)
- Must re-measured and re-mark the installation marking line 14mm from the cut surface on the housing after cutting, as shown in Fig. 5.
- Pre-mount the new pin(SM-B003) to housing first
- Use needle driver, insert new needle into the oil housing. (Please make sure the needle surface is flush with oil housing surface after installation)



/ 02 /

Function inspection

It is possible that air enters system during the installation. Inspection must be done before riding. Make sure that brake function works normally. In order to keep brake preformation as normal after hose cutting, please re-bleeding mineral oil and exhaust air to complete the installation. Please refer to step of "Operation for air exhaust process" in the RIDEREVER user manual. Please refer to "Function inspection manual" to ensure that brake function works normally after installation.

- Make sure the brake is either installed with rotor correctly on the frame or check if the block spacer is still in the caliper before inspection.
- Remove the lever block spacer.
- Press brake lever repeatedly for 10~15 times. Make sure the brake feeling is strong during pressing and the brake lever will not touch the handlebar. If it feels soft or the brake lever touch the handlebar without braking performance, please rebleeding oil and exhaust air (refer to the step of "Operation for air exhaust process" in the RIDEREVER user manual).

⚠ Attention !

- Must use required torque wrench and recommended tighten torque force in installation. Improper installation may cause the oil housing falling out during riding and in result of serious consequences to users and riders.
- If the oil housing is too short, the oil housing may be falling out from brake lever or caliper in riding due to over extension. The proper housing length must be decided before cutting.
- Please don't reuse olive bushing and insert needle. Used olive bushing and insert needle maybe deformed after tighten. It's not guarantee that the used olive bushing and insert needle can connect the lever or caliper firmly. Please use new spare parts.
- Please must to rebleeding mineral oil and exhaust air after housing cutting.
- The block spacer is assembled to avoid press by mistake but do not press the brake lever before complete installation of oil housing; otherwise it could lead to oil leaking.
- Remove the Lever block spacer after completed installation of oil housing.
- It is strongly recommended to use original RIDEREVER spare parts for oil housing to have completest function of RIDEREVER product.

/ 04 /